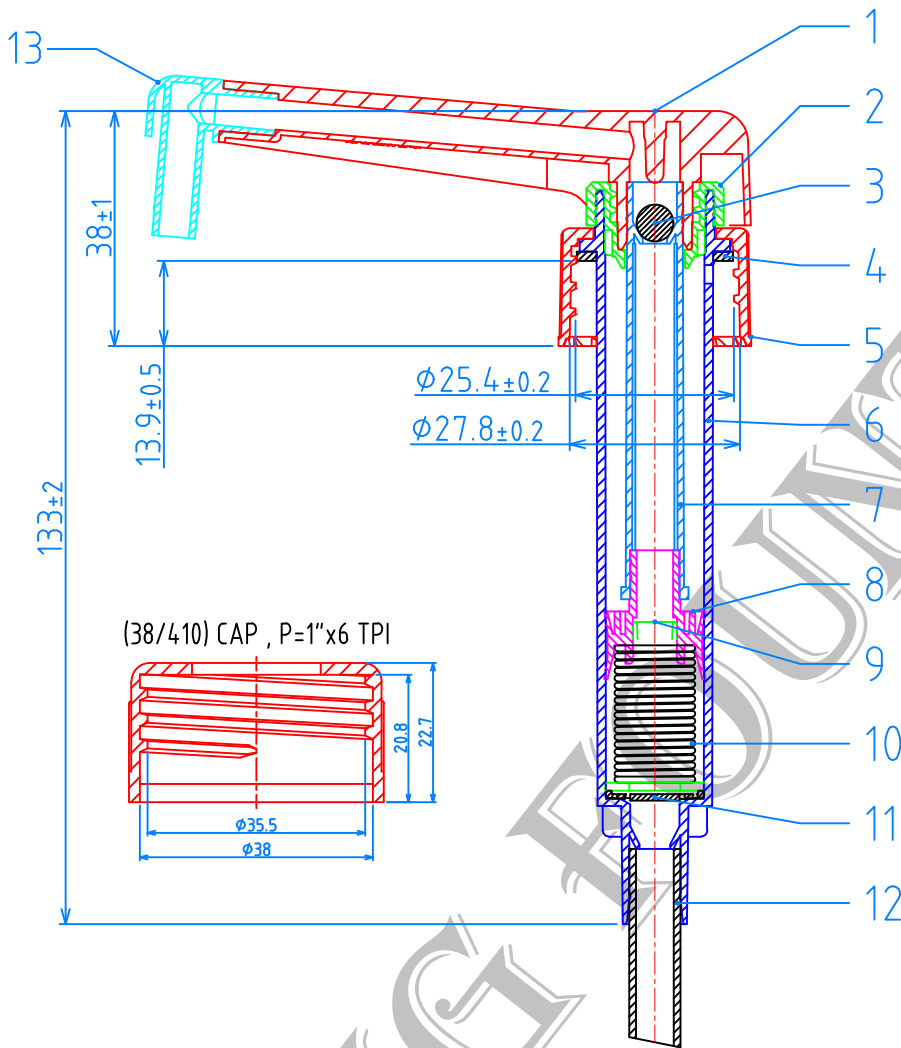
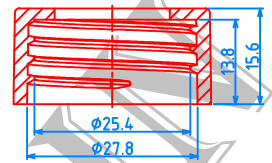




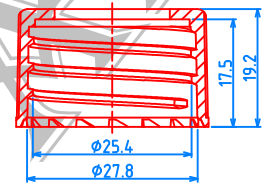
# 10cc Dispenser Pump (LDP-1023-S)



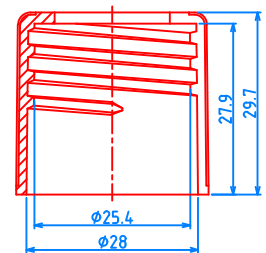
(28/400) CAP, P=1"x8 TPI



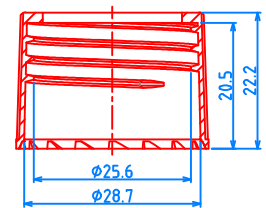
(28/410) CAP, P=1"x6 TPI



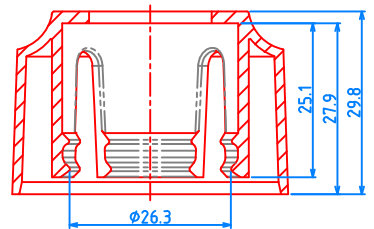
(28/415) CAP, P=1"x6 TPI



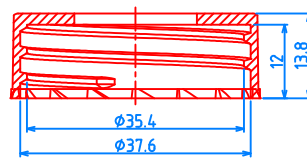
(28/水胚) CAP, P=1"x8 TPI



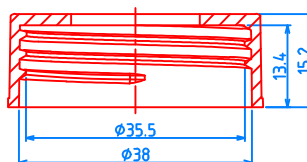
(28/強壓式) CAP



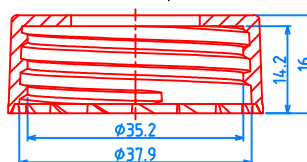
(38/400) (低) CAP, P=1"x6 TPI



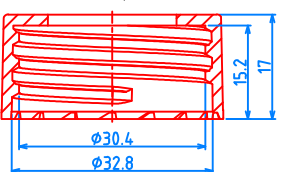
(38/400) (中) CAP, P=1"x8 TPI



(38/400) (高) CAP, P=1"x6 TPI



(33/410) CAP, P=1"x6 TPI



Item	Description	Material
1	按頭 ACTUATOR	PP
2	結合蓋 CHAPLET	PP
3	鋼珠 STEEL BALL	SUS-304
4	墊片 GASKET	LDPE
5	(28/410)牙蓋 CAP	PP
6	缸體 HOUSING	PP
7	活塞桿 PLUNGER	PP
8	活塞環 PISTON RING	LDPE
9	活塞座 PISTON BASE	HDPE
10	彈簧 SPRING	SUS-304
11	閥片 VALVE	PP
12	吸管 TUBE	LDPE
13	90°彎管 ANGLE SPOUT	PP

Date	2018/04/02
Drawing No.	dp1023s-a1-2800